



STAGE TO MOVE
Interior Design

Interior Design service included in...	Package 1	Package 2	Package 3
Design and Aesthetic Discussion:	✓	✓	✓
Comprehensive discussion on design concepts, styles, and aesthetic preferences to align with your vision for the house.			
Paint Colors:	✓	✓	✓
Selection of paint colors for the entire house to complement the desired design style and aesthetic.			
Existing Furniture Evaluation:	✓	✓	✓
Assessment of existing furniture and recommendations for their incorporation into the envisioned design.			
Layout Guidance:	✓	✓	✓
Suggestions for optimizing the layout to enhance the chosen design style's functionality and appeal.			
Additional Lighting Requirements:	✓	✓	✓
Recommendations for additional lighting fixtures to accentuate the chosen aesthetic and improve functionality.			
Furniture Styles and Suggestions:	✓	✓	✓
Guidance on furniture styles, as well as suggestions for bookshelves and built-ins to harmonize with the selected design theme.			
Creation of 2D floor plans for three rooms.		✓	✓
Determination of the appropriate furniture items, dimensions, and proportions for three rooms.			
Creation of 3D floorplan and furniture sourcing for three rooms.			✓
Furniture Sourcing. Effortlessly choose actual furniture pieces from a virtual design board in the comfort of your home.			
	\$695.00	\$1,750.00	\$4,950.00



Package Option 1

LEVEL 1: Design Consultation - \$695.00

Duration: 2 hours

Outcome: Receive a detailed report covering design concepts, paint colors, existing furniture and how it can be incorporated, a lighting evaluation and the determination of your furniture style and aesthetic you'd like for your home.

Focus:

- Design and Aesthetic Discussion
- Paint Colors
- Existing Furniture Evaluation
- Layout Guidance
- Lighting Evaluation
- Furniture Styles and Suggestions

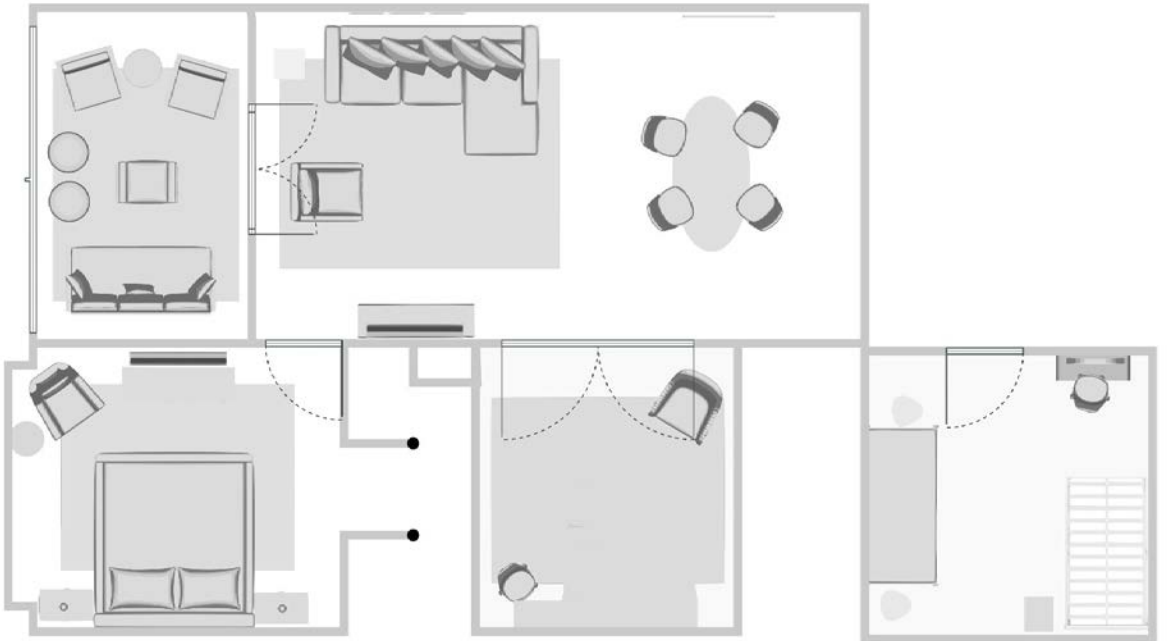
Consultation Personnel:

Dedicated time with a Senior Designer for personalized design discussions.

Booking:

Call Stage To Move at 203.240.2104 or 203.733.3037

Or email us at Support@stagetomove.com



Package Option 2

LEVEL 2: Design Consultation - \$1750.00

Duration: 2 hours on-site + 1 hour follow-up, 6+ hours off-site design.

Includes all items in Level 1 and in addition creates a 2D plan for 3 rooms incorporating furniture placement, size, and scale. This allows you to take the next steps of sourcing items and finding your perfect pieces with ease and comfort that it be the correct scale and size.

Outcome: Detailed report with design concepts, paint colors, 2D furniture layouts for 3 rooms, lighting suggestions, and furniture style advice. Optional furniture sourcing services available.

Focus:

- Design Discussion
- Paint Color Selection
- Existing Furniture Evaluation
- Layout Guidance
- Lighting Evaluation
- Furniture Styles and Suggestions
- 2D Floor Plans

Optional Add-ons:

- Furniture Sourcing: \$185/hour
- Order Placement, Tracking, Delivery, and Installation: \$150/hour
- Accessorizing and Styling New Furniture: \$185/hour

Note:

Hourly rates apply. Senior Designer provides dedicated consultation.

Booking:

Call Stage To Move at 203.240.2104 or 203.733.3037

Or email us at Support@stagetomove.com



Product List Total: \$4,113.97 Preview as Client What Client Sees

<p>Celine 6 Drawer 60" W Double Dresser \$1,270.00 1</p> <p>Approved <input type="checkbox"/> Shop It</p>	<p>Cassie Round Wall Mirror \$99.00 1</p> <p>Approved <input type="checkbox"/> Shop It</p>	<p>Viviana 54" Ceiling Fan with LED Lights \$279.99 1</p> <p>Approved <input type="checkbox"/> Shop It</p>

Package Option 3

LEVEL 3: Design Consultation Package - \$4950.00

Duration: 3 hours on-site + 1 hour follow-up + 2 hour revision follow-up, 15+ hours off-site design.

Includes all items in Level I and II and in addition sources actual furniture items for your review and purchase on a virtual design board that makes it easy to shop at home or on-line.

Outcome: A detailed report covering design concepts, paint colors, 3D furniture layouts for 3 rooms, lighting and furniture sourced for your procurement. With the guidance of our design professionals designing a home is easy, efficient and exciting!

Focus:

- Comprehensive Design Discussion
- Paint Colors
- Existing Furniture Evaluation
- 3D Floor Plans
- Furniture Sourcing (2 edits/changes per room included, additional options at \$185/hr)
- Lighting Evaluation
- Furniture Styles and Suggestions

Optional Add-ons:

- Order Placement, Tracking, Delivery, and Installation: \$150/hour
- Accessorizing and Styling New Furniture: \$185/hour

Note:

Hourly rates apply. Senior Designer provides dedicated consultation.

Booking:

Call Stage To Move at 203.240.2104 or 203.733.3037

Or email us at Support@stagetomove.com



STAGE TO MOVE

— AWARD WINNING —
HOME STAGING AND DESIGN

www.stagetomove.com

Contact us today to begin the process of
turning your dream home into a reality

info@stagetomove.com

Ph: 203-733-3037

Christina@stagetomove.com

Ph: 203-240-2104

